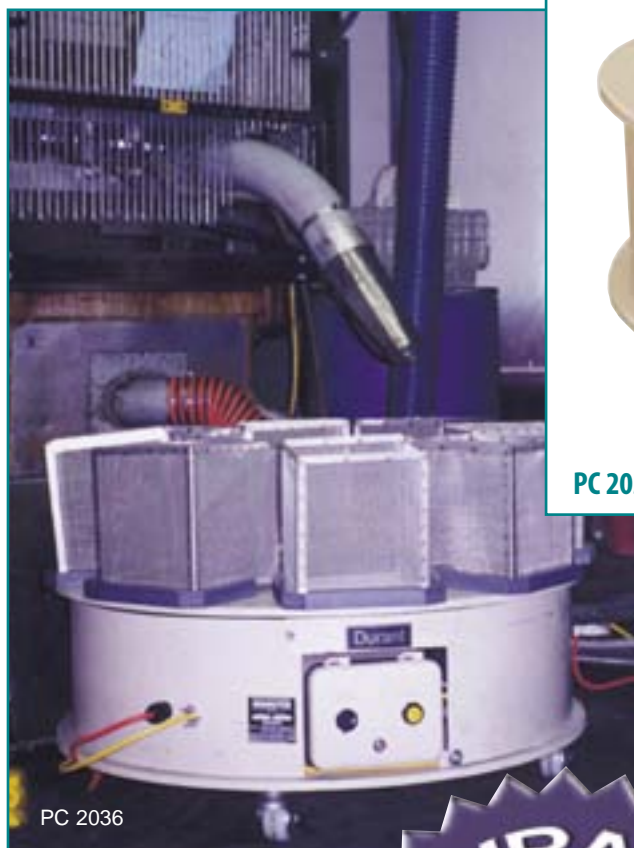


Parts Collector / Index Table

Parts Collectors/Index Table

The Durant Model PC 2000 Parts Collector / Index Table is the ideal machine for collecting stamped small parts as they are produced. Set a count mechanism to indicate the number of parts desired to be collected per container. Once you have produced the set number of parts, the turntable will index automatically to the next position. There are eight positions or container places available on our standard diameter turntable.



PARTS COLLECTOR / INDEX TABLE				
Model	Weight Capacity	Turntable Diameter	Number Index Positions	Motor H.P.
PC 2030	2000 lbs.	30"	8	1/2 hp.
PC 2036	2000 lbs.	36"	8	1/2 hp.
PC 2042	2000 lbs.	42"	8	1/2 hp.
PC 2048	2000 lbs.	48"	8	3/4 hp.
PC 2052	2000 lbs.	52"	8	3/4 hp.
PC 2060	2000 lbs.	60"	8	3/4 hp.
PC 2072	2000 lbs.	72"	8	3/4 hp.

NOTE: Additional index positions available.

